



# QC<sup>®</sup> 快可

## QC4.10-cds

### Product Specification



note: subject to change without any notice, JDA pay no responsibility

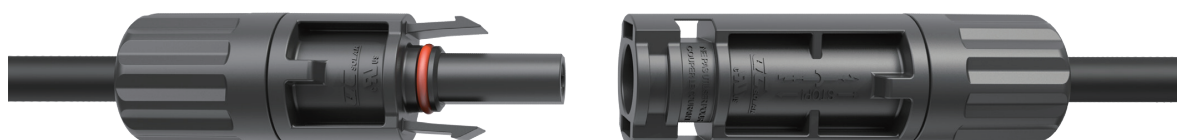


## 目錄

01. 產品外觀及設計性能參數 Product appearance and technical parameters	03
02. 連接器BOM 清單 Connector BOM List	05
03. 連接器圖紙 Drawing of connector	06



### 01. 產品外觀及設計性能參數 Product appearance and technical parameters



技術參數 Product Specifications		
認證 Certificate	UL	TUV
名稱 Product Name	Series QC4.10, followed by -a5, may be followed by none, followed by c12, c13, c14 or c15, followed by d1 or d3, followed by e2 or e4, may be followed by f1, and may be followed by g1.	QC4.10 ( PLUS )
認證型號 Certified Model	QC4.10-a5CDEf1g1	QC4.10-cds
額定電壓 Rated Voltage	UL1500V	IEC1500V
額定電流 Rated Current	30A for 14AWG 35A for 12AWG 50A for 10AWG	36A for 2.5mm <sup>2</sup> 41A for 4.0mm <sup>2</sup> 46A for 6.0mm <sup>2</sup>
線纜規格 Cable Specification	90OC 2000V, Strands of Conductor 41~84/0.25~0.3, OD5.9~7.2mm, 14 AWG, 12 AWG, 10 AWG	IEC 1500V, Strands of Conductor 41~84/0.25~0.3, OD 4.7~7.2mm, 2.5mm <sup>2</sup> , 4.0mm <sup>2</sup> , 6.0mm <sup>2</sup>
防護等級 IP degree	N/A	IP65/IP68(1m,1h)
安全等級 Protection Class	N/A	Class II
接觸電阻 Resistance of Connector	Max 0.3mΩ	Max 0.3mΩ
防火等級 Flammability Class	UL94 V-0	UL94 V-0
溫度範圍 Temperature Range	-40°C ~ +85°C	-40°C ~ +85°C
Caution	"Do Not Disconnect Under Load: PV plug connections must not be disconnected while under load. They can be placed in a no load state by switching off the DC/AC converter or breaking the AC circuit" .	N/A



UL 命名 UL NOMENCLATURE	TUV 命名 TUV NOMENCLATURE
<p>NOMENCLATURE: QC4.10 – <math>\frac{x}{A} \frac{x}{B} \frac{x}{C} \frac{x}{D} \frac{x}{E} \frac{x}{F} \frac{x}{G}</math></p> <p>Where:            A – Maximum System Voltage                a5 – 1500V            B – Connector Type                none – locking type            C – PV Wire Type                c12–2000V, 12AWG, 48/0.30 (str/dia)                c13–2000V, 12AWG, 56/0.285 (str/dia)                c14–2000V, 10AWG, 84/0.285 (str/dia)                c15–2000V, 14 AWG, 41/0.25 (str/dia)            D – Material of Connector Housing                d1 – EXL9330(GG)(X)(f1)(B1)(IP)                d3 – PV40Z(f1)            E – Material of Cover Nut                e2 - A3XZG5(f1)                e4 - PA66 T303(XX)GF BK - D(f1)            F - construction                f1 - Connectors with 18.6 mm outer diameter            (Plus Construction)            G – Type of Pin Crimp Connector (male) and            SocketConnector (female)            g1 – With an Electric Lock integrated, only for F=f1</p> <p>Caution:            1. For Copper Stranded Wire Only.            2. The product installation and use meet the requirements of PV modules.            3. The connector is considered to be in compliance with UL 6703, Connectors for Use in Photovoltaic Systems, Edition 1, Revision Date 06/10/2021 only when assembled in the manner specified by these assembly instructions.</p> <p>This connector is suitable for use only with Class B and C stranded copper conductors (See NFPA 70, National Electrical Code, Edition 2020, AMD 1 - 17, Revision Date 04/12/2022, Chapter 9, Table 10).</p>	<p>Type Designation : QC4.10-cds            Remark: QC4.10-cds is a general designation. The prefix letter "c" 、 "d" 、 "s" denotes different technical and design meanings.</p> <p>1.c=3 or 4            c=3 denotes rated voltage 1500V with baffle plate;            c=4 denotes rated voltage 1500V without baffle plate</p> <p>2.d=4 or 5 or 6            d=4 denotes rated current 36A with stamping;            d=5 denotes rated current 41A with stamping;            d=6 denotes rated current 46A with stamping;</p> <p>3.s= 1 (Plus constructure )</p> <p>Wire cross section area or cross section range :            1 x 2,5mm<sup>2</sup> for QC4.10-341; QC4.10-441;            1 x 4,0mm<sup>2</sup> for QC4.10-351; QC4.10-451;            1 x 6,0mm<sup>2</sup> for QC4.10-361; QC4.10-461;</p>

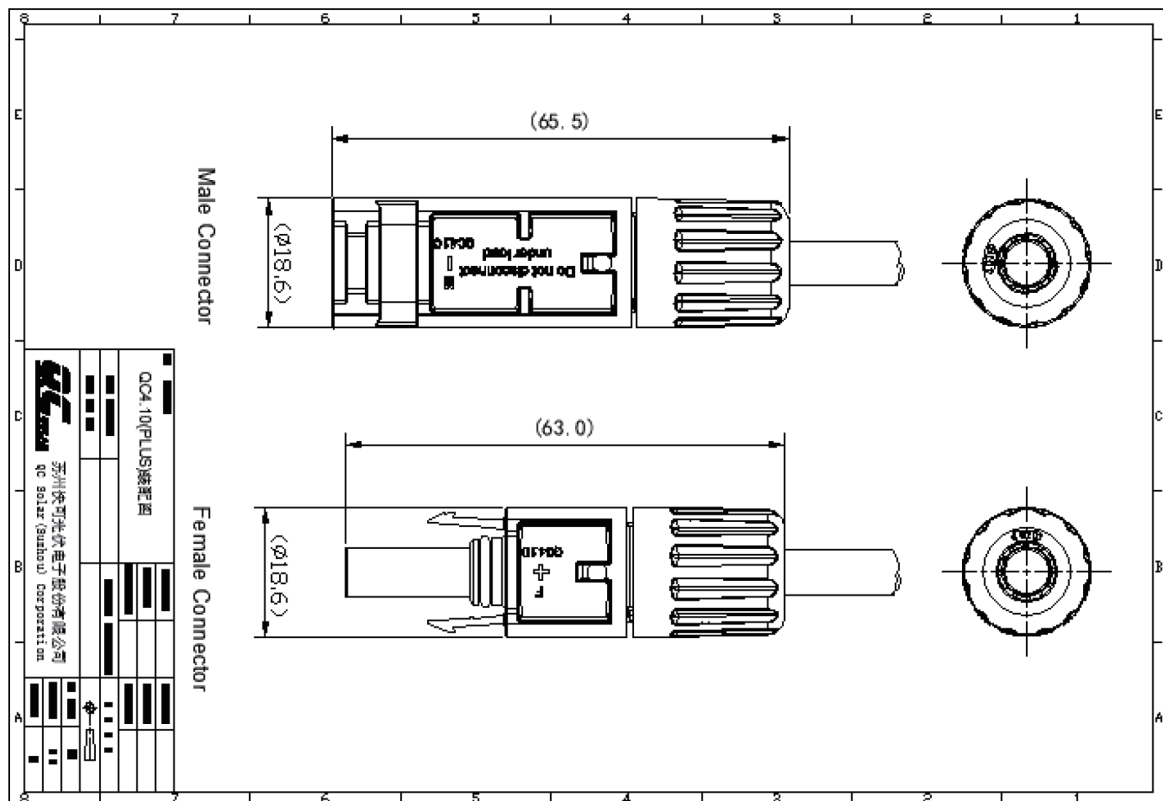
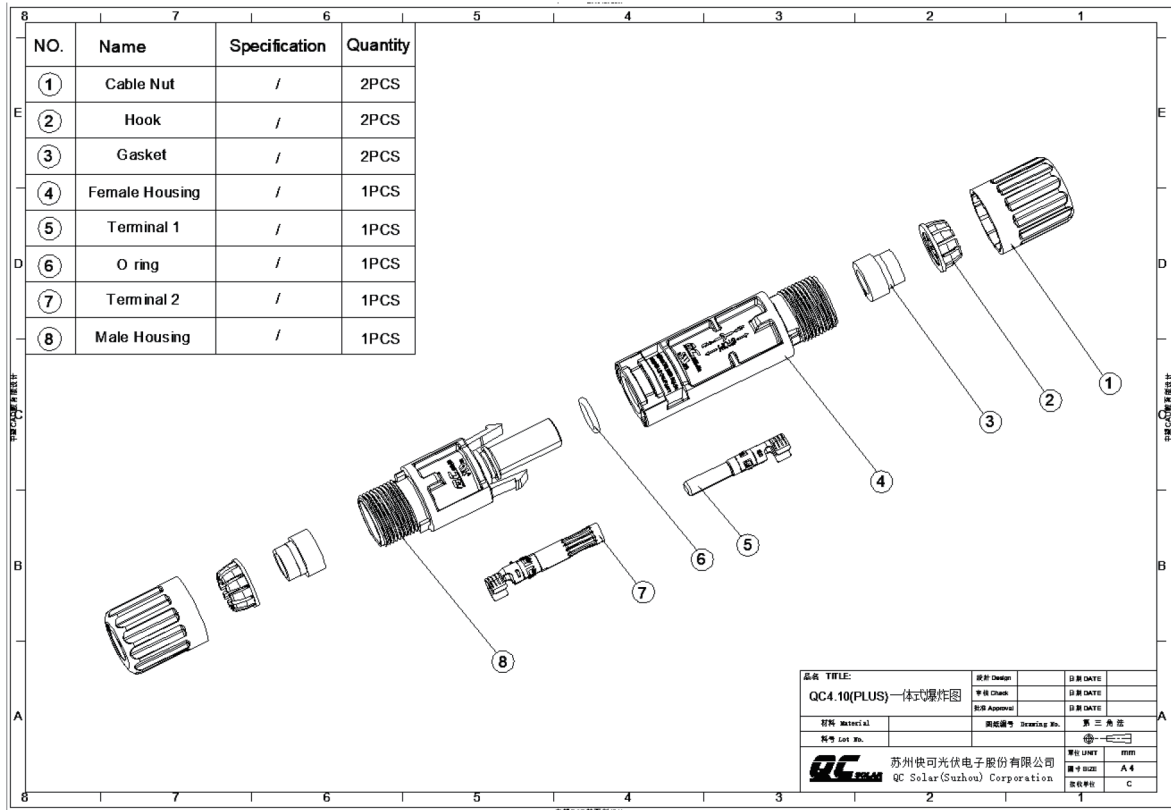


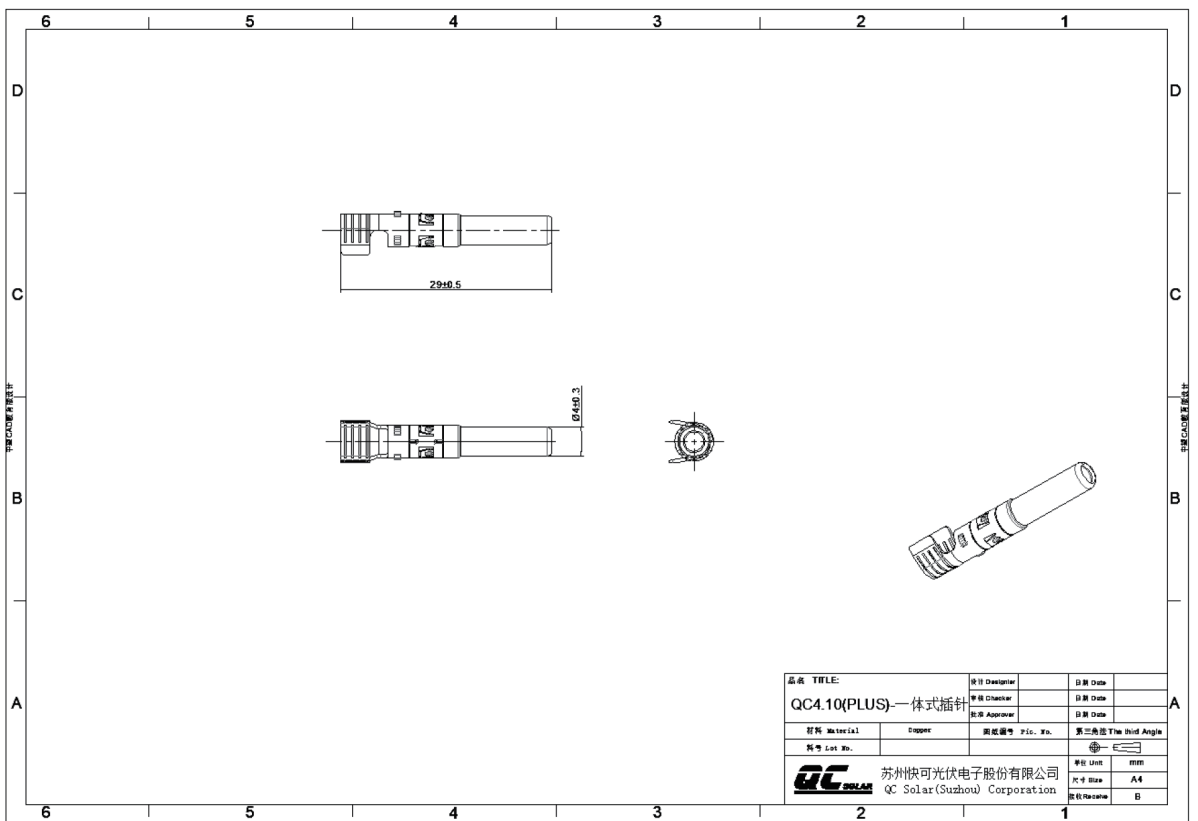
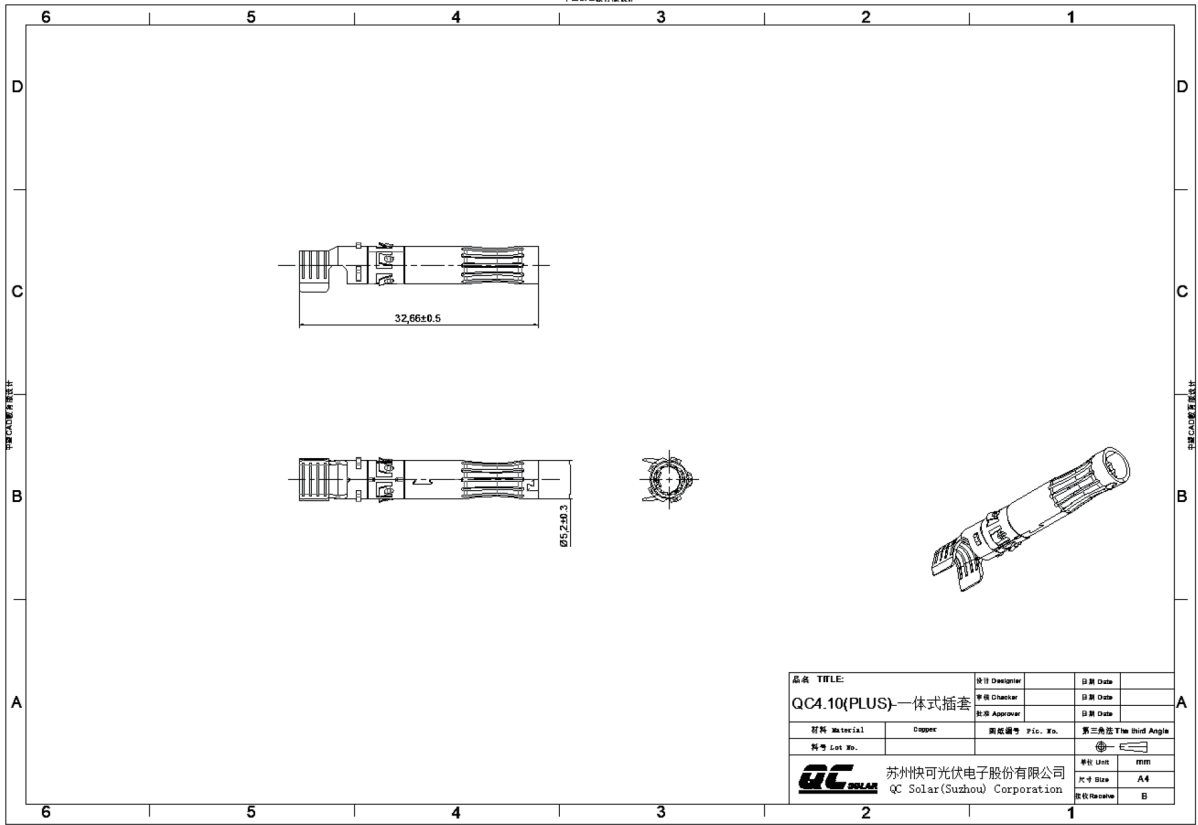
## 2. 連接器BOM清單 / Connector BOM List

產品名稱 Product Name	連接器 Connector	材料清單 Bill Of Materials	版本 Version	A/0
產品型號 Model	QC4.10-cds		張數 Page	1
客戶 Customer	/		發行日期 Version Date	2022.08.11
序號 S/N	名稱 Description	材質 Material	數量 Quantity	備註 Remark
1	正極本體 Female housing	PPE	1 pcs	
2	負極本體 Male housing	PPE	1 pcs	
3	後罩 Screw cap	PA	2 pcs	
4	內爪 Cable clamp	PPE	2 pcs	
5	堵頭 Sealing gasket	硅橡胶 Silicone rubber	2 pcs	規格一：4.7-6.0 規格二：5.6-6.8 規格三：6.0-7.2
6	紅色O型圈 O sealing ring	硅橡胶 Silicone rubber	1 pcs	
7	插針 Metal plug	銅鍍錫 Tin-plated copper	1 pcs	
8	插套 Metal socket	銅鍍錫 Tin-plated copper	1 pcs	
以上原料符合歐盟ROHS 要求 All the materials above are subject to RoHS requirement				



3. 連接器圖紙 / Drawing of connector








日煬國際事業股份有限公司  
JD Auspice Co., Ltd.



 [www.jdauspice.com](http://www.jdauspice.com)



 [@jdauspice](https://www.facebook.com/jdauspice)



 ID : @jdapv

